



Join  
the

LORAX

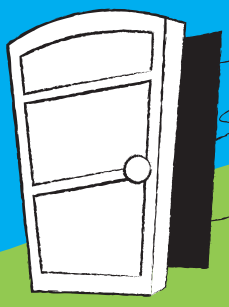
To Help Save Energy, Water,  
and Protect the Planet

Activity Book

Join the Lorax and ENERGY STAR by doing your part.  
Save energy at home and at school -  
to keep pollution out of the air and keep the earth cool!  
The Lorax can teach us a thing or two,  
about saving water - that's good for the earth too!



The **Lorax** is proud to speak for the earth!  
 Without it, what would our **future** be worth?  
 Now he **needs YOU** to be of assistance  
 And to all the **Once-lers**, offer **resistance!**  
 Join **US** in **spreading the word**,  
 And finally the **voice** of the **earth** will be heard.



Heating and cooling your humble abode.  
 Increases your home's total energy load.  
 Stop energy waste, and keep your air clean.  
 By shutting the doors and the windows you've seen!



Do you want to help?  
 Well it's your lucky day—  
 The tips on this trail will show you the way.  
 Just follow the path – go hurry on in,  
 And mark what you've read by coloring in!

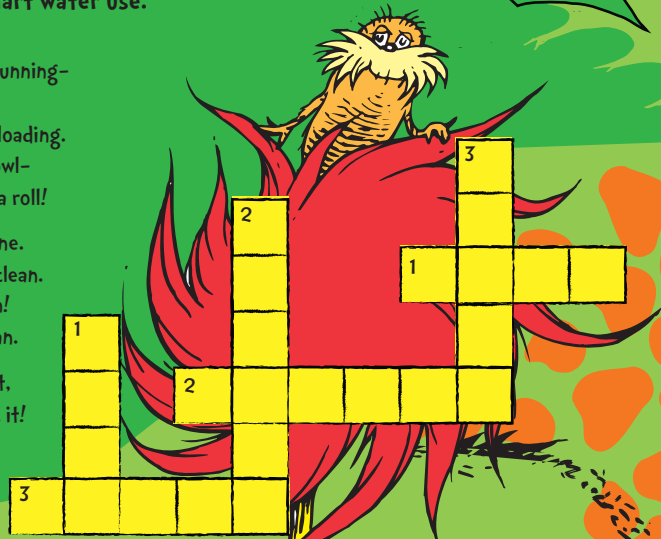
**WATER CROSSWORD PUZZLE**

Truffula Trees can grow greener and taller,  
 When you take simple steps to help conserve water!  
 Check out the poem below for ways to save and reduce.  
 And then fill in the blanks about smart water use.

It's wasteful to leave the tap pouring and running—  
 So turn off the **faucet** while brushing.  
 And **scrape** dishes off before dishwasher loading.  
 Wash **fruit** and veggies in a water-filled bowl—  
 No need for running water – now you're on a roll!

What else uses water? The washing machine.  
 Make sure it's **full** before getting clothes clean.  
 Time for a shower? Keep it short if you can!  
**Five** minutes is plenty to get spick and span.

And when the time comes for a new faucet,  
**WaterSense** means it's efficient – so pick it!



**Across**

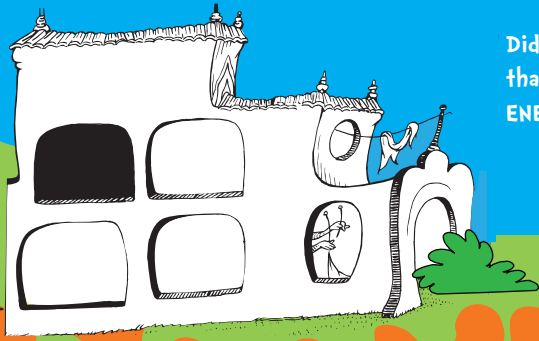
- 1- Make sure the washing machine is \_\_\_\_\_ and set to use cold water before turning it on.
- 2- Turn off the \_\_\_\_\_ while you brush your teeth.
- 3- Look for Water \_\_\_\_\_ labeled shower heads, faucets, and other products.

**Down**

- 1- Keep your showers to \_\_\_\_\_ minutes or less.
- 2- \_\_\_\_\_ off dishes, instead of rinsing, before they go in the dishwasher.
- 3- Wash \_\_\_\_\_ and veggies in a container or bowl, instead of under running water.



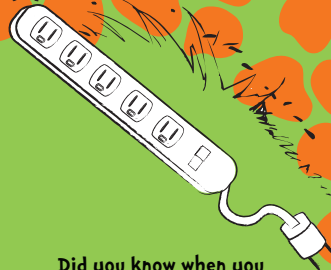
When you walk by the trash basket today,  
 Remember the Lorax and what he would say:  
 Paper is made from the Truffula Trees,  
 So whenever you can, recycle it please!



Did you know? Buildings and homes that save energy can earn the ENERGY STAR too!



It may be surprising -  
it may make you scoff,  
But electronics use energy  
even when turned off!  
A "smart" power strip cuts  
the energy flow,  
When you turn off the TV  
at the end of your show!



ENTER

EXIT



Did you know when you  
recycle your plastic,  
Its transformation can be  
truly drastic?  
Playgrounds and t-shirts,  
and sleeping bags too,  
Are just some of the ways  
plastic can be made new.

### WORD SEARCH

Here are some ways you can help save the planet,  
And a puzzle to make it more fun, while you're at it!  
The words in this puzzle are hidden, it's true—  
But look very closely and they'll come into view.

C	T	F	A	L	T	H	F	G	V	H	X
U	E	Q	R	E	D	U	C	E	W	J	M
I	N	Q	M	L	A	R	Q	Z	S	I	B
V	E	U	L	U	O	Z	S	H	A	R	E
O	R	K	E	P	R	O	T	E	C	T	L
R	G	W	A	T	E	R	S	E	N	S	E
E	Y	U	R	S	L	L	Q	R	G	X	B
U	S	E	N	R	R	K	R	T	T	L	T
S	T	L	C	O	N	S	E	R	V	E	Y
E	A	E	I	U	B	G	H	R	Q	H	G
W	R	E	A	N	B	K	I	L	T	S	N
R	E	C	Y	C	L	E	Z	A	O	P	T



CONSERVE | PROTECT | RECYCLE | REDUCE | REUSE | SHARE  
LEARN | ENERGY STAR | WATERSENSE



# ENERGY STAR and WaterSense Super Sleuths

When you go to the store, you face so many options:  
"Pick me!" "I'm the best!" say all the contraptions.

In all of those sounds, there is one little voice saying,  
**ENERGY STAR is the simple choice!**

So open your eyes and put on your glasses—  
And see who can find all these items the fastest!

Can you find these things? **ENERGY STAR** certified refrigerator,  
light bulb, washing machine, lamp, window, door, and air  
conditioner; AND the **WaterSense** labeled showerhead and faucet

The Once-ler comes looking  
for Truffula Trees,

In search of new ways to make  
profit with ease.

He doesn't reuse or recycle—he hunts,  
for the things that he wants  
and will use only once.



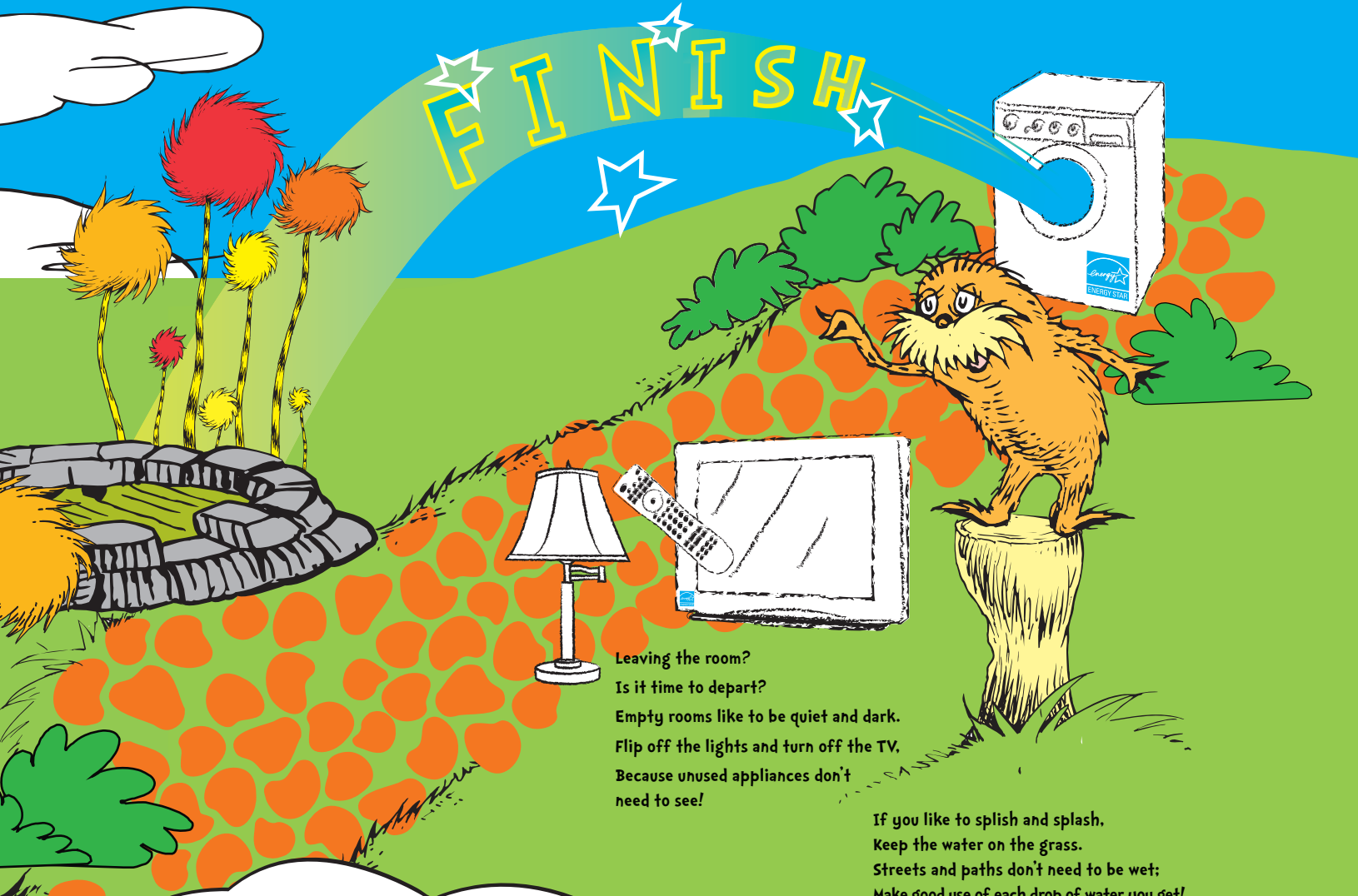
## More ways to help

Our planet has limited resources, but the population continues to grow –  
So EPA offers tips and tricks to help us reduce, reuse, and recycle.  
Learn how you can save and share what you learn with your friends and family!

[energystar.gov/kids](http://energystar.gov/kids) | [epa.gov/watersense/kids](http://epa.gov/watersense/kids) | [epa.gov/recycle](http://epa.gov/recycle)



FINISH

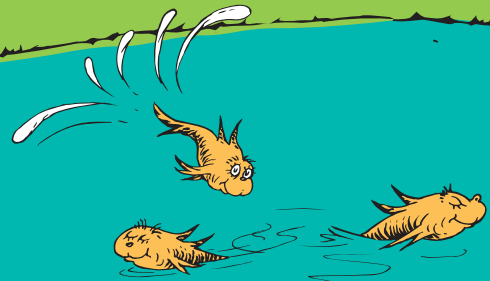


Leaving the room?  
Is it time to depart?  
Empty rooms like to be quiet and dark.  
Flip off the lights and turn off the TV.  
Because unused appliances don't  
need to see!

If you like to splish and splash,  
Keep the water on the grass.  
Streets and paths don't need to be wet;  
Make good use of each drop of water you get!

### FUN WITH SAVING MATCH GAME

Each of us must do our part to conserve,  
But if two work together, that steepens the curve!  
The trees must stay green; the ice must not melt—  
So ENERGY STAR and WaterSense are here to help.  
Cut out the cards, and place them face-down.  
Pick up a card, and flip it around.  
Can you remember the right card to match?  
Two at a time only, please—that's the catch!



 <b>Join the LORAX</b>	 <b>Join the LORAX</b>	 <b>Join the LORAX</b>	 <b>Join the LORAX</b>	 <b>Join the LORAX</b>
 <b>Join the LORAX</b>	 <b>Join the LORAX</b>	 <b>Join the LORAX</b>	 <b>Join the LORAX</b>	 <b>Join the LORAX</b>

# Do-It-Yourself!

Fill in the blanks to write your own poem and see how the world will look if we all find ways to save energy and protect the environment.

Protecting the \_\_\_\_\_ is a tough job for one.  
your favorite part of nature

But if nobody starts, it never gets done!

So when leaving the \_\_\_\_\_, be energy smart.  
room in your home

Turn off the \_\_\_\_\_ so you're doing your part!  
rhymes with "rights"

And if you're getting a new game console or TV,

ask for one that's proven to \_\_\_\_\_ energy!  
verb

Together we'll keep \_\_\_\_\_ healthy and clean,  
your favorite part of nature

And the skies always \_\_\_\_\_,  
color

And the trees always \_\_\_\_\_.  
color

For kids – and grown-ups too – who care a whole awful lot,  
Don't fret the book is over; our mission to protect the earth is not!

Go to:

[energystar.gov/kids](http://energystar.gov/kids) and  
[epa.gov/watersense/kids](http://epa.gov/watersense/kids)

to learn more

